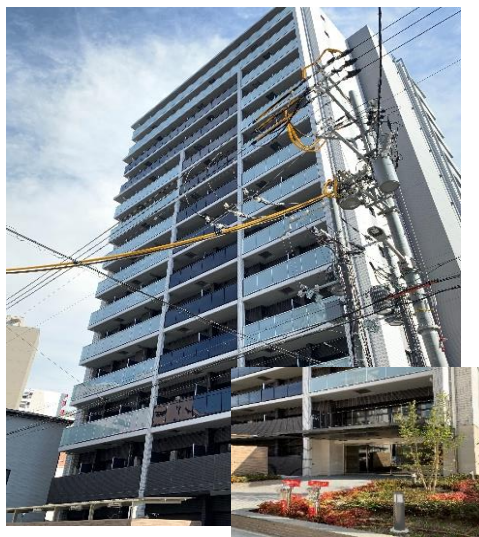


Daikokucho st, 3minutes



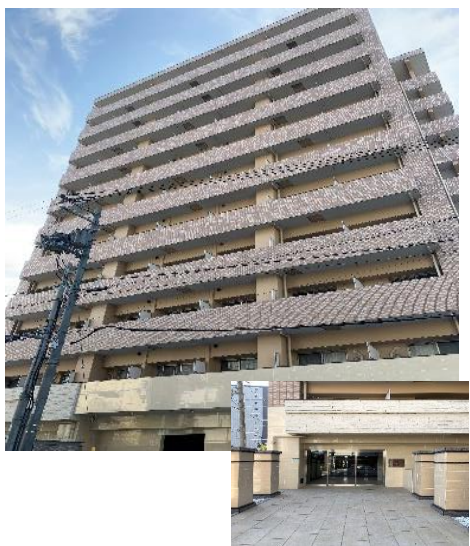
Monthly Costs **¥-52,500**
 Size 1K(22.94 m²)
 Deposit ¥0-
 Key money ¥52,500-
 Floor
 Management fee ¥15,000-
 Nearest station Subway
 Daikokucho ,st
 Year built 2019
 ☆
 No,03202019041

Daikokucho st,2minutes



Monthly Costs **¥51,500-**
 Size 1K(22.96 m²)
 Deposit ¥0-
 Key Money ¥150,000-
 Floor 2
 Management Fee ¥10,000-
 Nearest station Subway
 Daikokucho. st
 Year built 2015
 ☆
 No,03202019042

Daikokucho st, 4minute



Monthly Costs **¥44,000-**
 Size 1K(23.20 m²)
 Deposit ¥ 0 –
 Key money ¥ 44,000 –
 Management fee ¥25,000-
 Floor 7
 Nearest station Subway
 Daikokucho,st
 Year built 2016
 ☆
 No,03202019043

Nihombashi st,4minutes



Monthly costs **¥44,000-**
 Size 1K(20.00 m²)
 Deposit ¥0-
 Key money ¥44,000-
 Management fee ¥8,000-
 Floor 2
 Nearest station Subway
 Nihombashi,st
 Year built 1998
 ☆
 No,03202019044